

Customer :

customer

Customer part :

customer part

Comment :

Comment

S1=0.74

S2=12.78

Tmax=440

Tp S2=479.0

PI=0.06

HI=250

Sample =9107

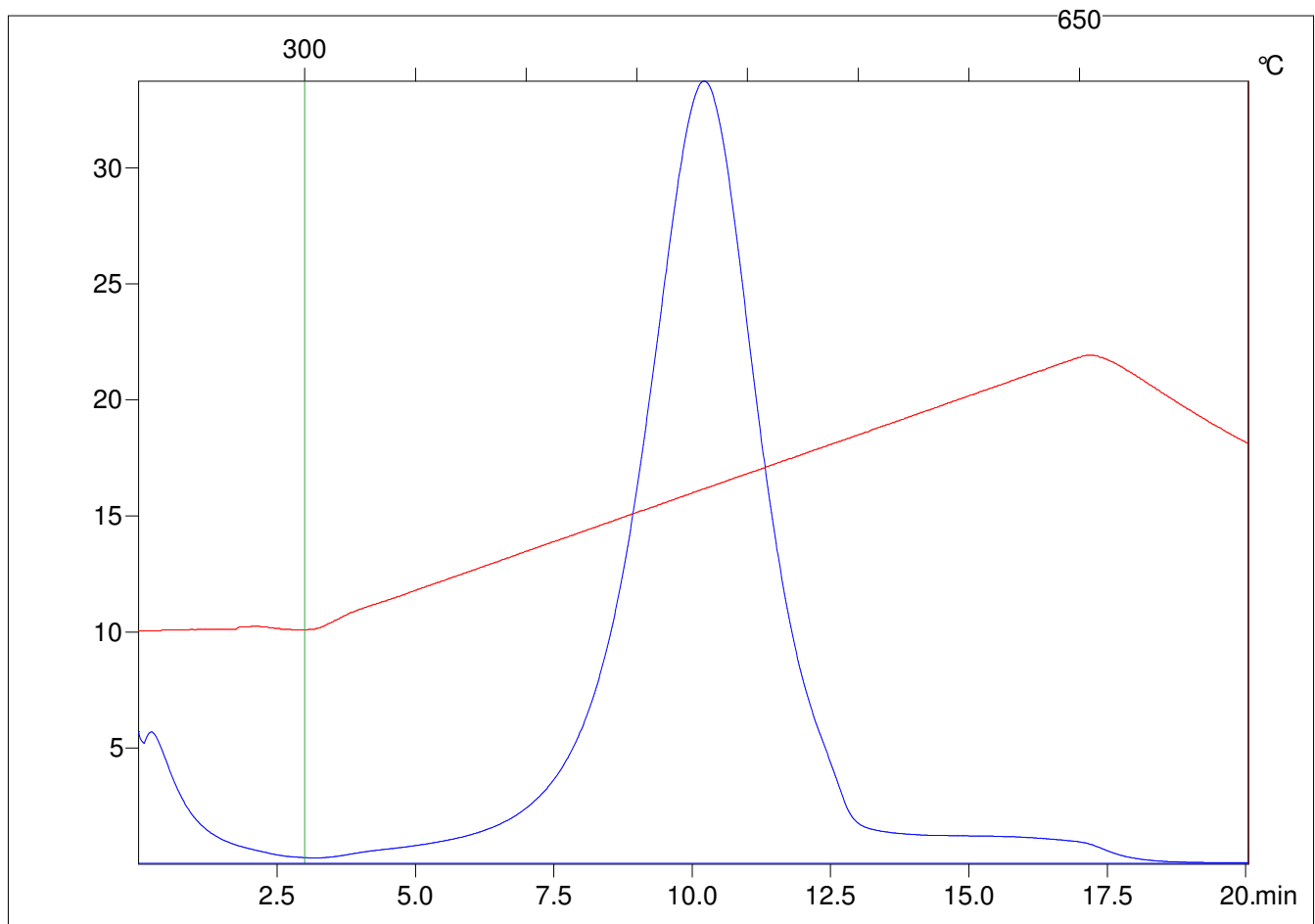
Method =Bulk Rock

Cycle=Basic

KFID(10*9)=1550

Qty =70.7

TOC=5.11



C:\VINC\PK130315\PK001.R00 : FID pyrolysis graphic

State

Pyro Status

Oxi Status